



targa otsustaja partner

Regional collaboration in the development of entrepreneurship

Tarmo Pikner
BDA Consulting OÜ

Estonia-Norway contact seminar of local and regional development,
28.03.2008, Tallinn

BDA Consulting OÜ

- strategic management consultations
- profound experience of developing and managing of EU projects
- our clients are organisations from all sectors
- we have participated in about 300 different projects
- we have 20 smart persons at your service



targa otsustaja partner

Services for local governments and non-profit organisations

- local and regional development plans
- strategic development concepts and analysis (tourism, entrepreneurship, etc.)
- development projects for innovations, strategic management processes in public organisations
- environmental consultancy



targa otsustaja partner

Content of the presentation

- The role of collaboration networks and clusters in development of entrepreneurship, practical examples
- Example 1: Haparanda-Tornio twin-city in Sweden and Finland – city planning and management of corporate investments
- Example 2: design centre Zollverein in Germany – supporting regional economic cluster
- Example 3: Ida-Viru industrial parks – collaboration on common marketing
- Some advises to advance collaboration and development of entrepreneurship



targa otsustaja partner

Regional collaboration and entrepreneurial environment

- Collaboration networks and economic clusters as action guiding concepts

Networks	Clusters
Access to information and services	Creating new skills and services
Limited membership	Open membership
Contract relationships	Social values, trust
Collaboration	Collaboration and competition
Business purposes	Collective vision and mileu

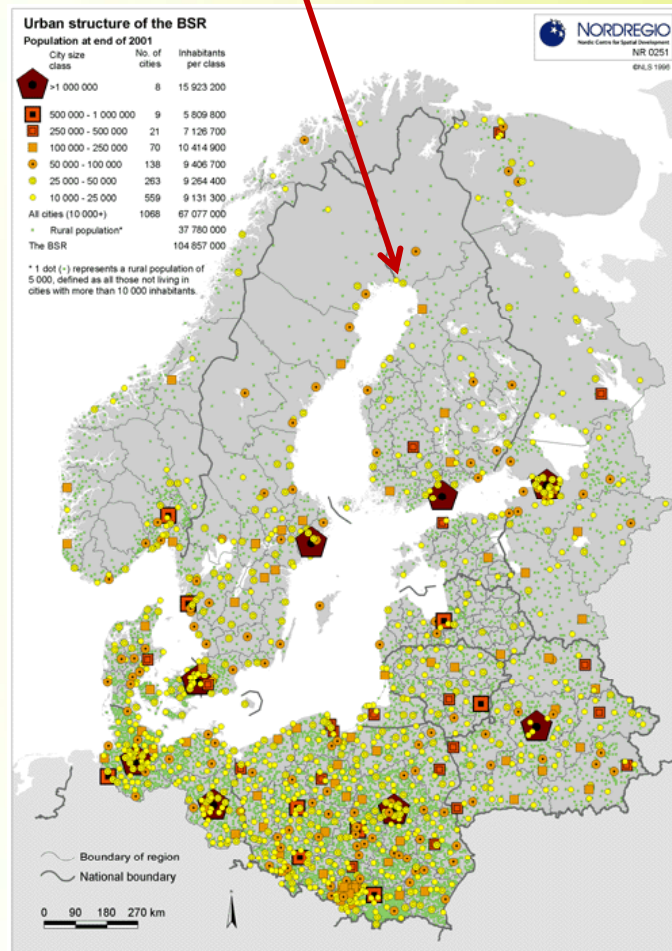
T. Banyai , J. Riives

- 3T model: Talents – Technology – Tolerance (Florida, 2005)
- Cities and towns have important role in knowledge economy



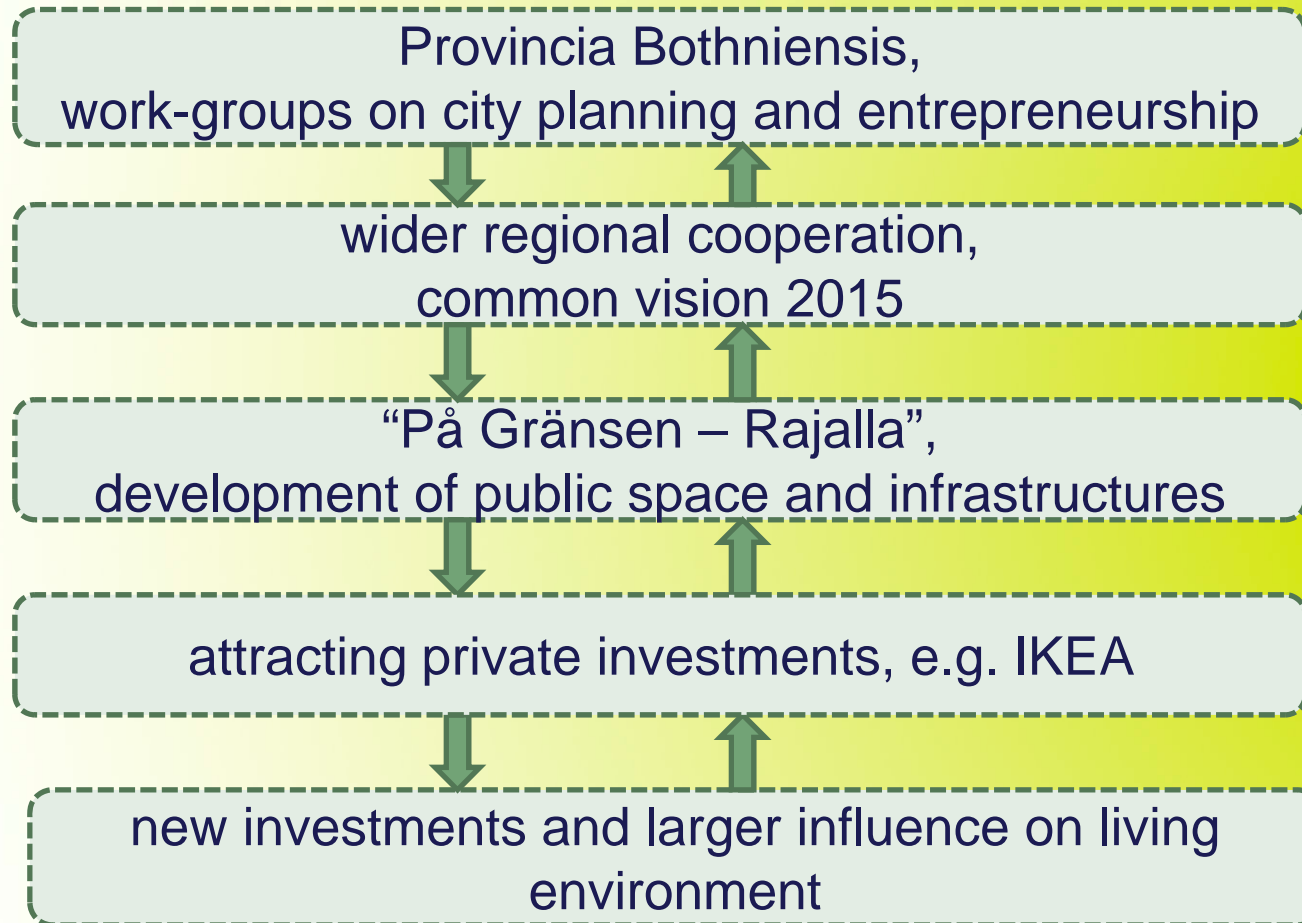
targa otsustaja partner

Haparanda-Tornio twin-city in Sweden and Finland (1)



- Small towns, tight cultural relations
- Common services and infrastructures
- Peripheral location and out-flow of consuming capacity
- New collaboration possibilities through EU membership

Haparanda-Tornio twin-city in Sweden and Finland (2)








Haparanda-Tornio twin-city in Sweden and Finland (3)

PÅ GRÄNSEN - RAJALLA

Haaparanta

Tornio

-  Haaparannan kaupunki
-  Tornion kaupunki
-  Vägverket
Region Norr
-  Lapin tiepiiri
-  Euroopan Unioni



targa otsustaja partner

Zollverein design centre in Ruhr Germany (1)

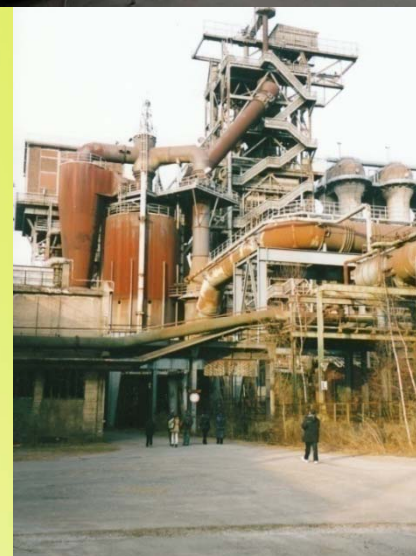


- Ruhr – previous heavy industry area in Germany, in whole urban region living a 4.5 million persons
- Collaboration platforms of cities on regional level, e.g. applying for organising city of olympic games
- Changes of economic structures, active development of economic clusters
- Zollverein: previous coal industry complex, UNESCO cultural heritage

Zollverein design centre in Ruhr Germany (2)

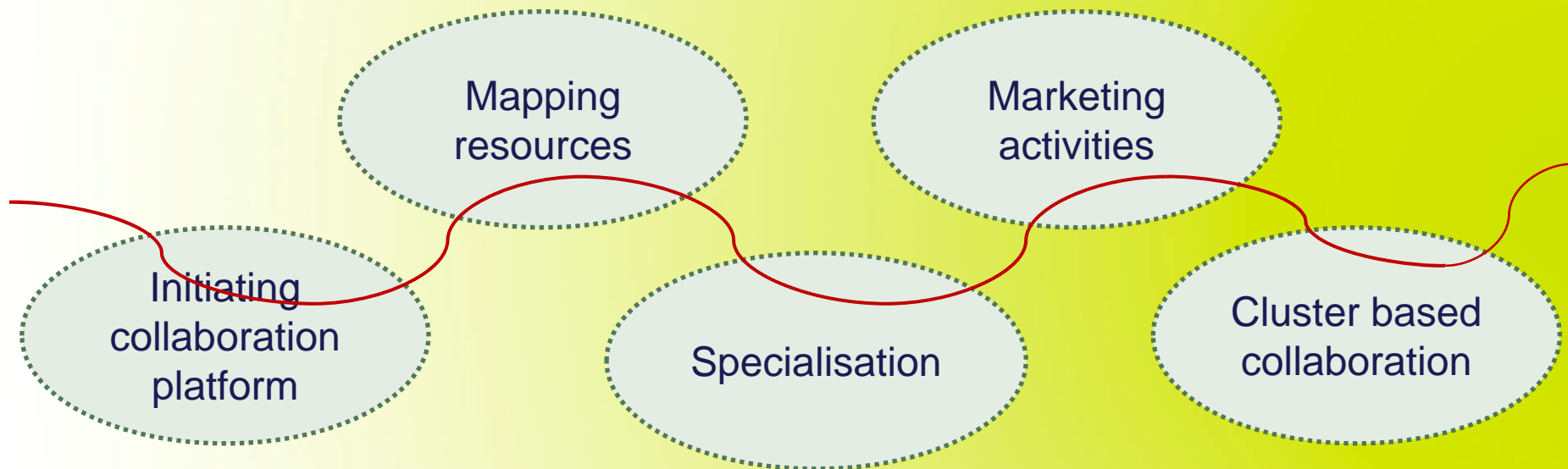


Zollverein design centre in Ruhr Germany (3)



targa otsustaja partner

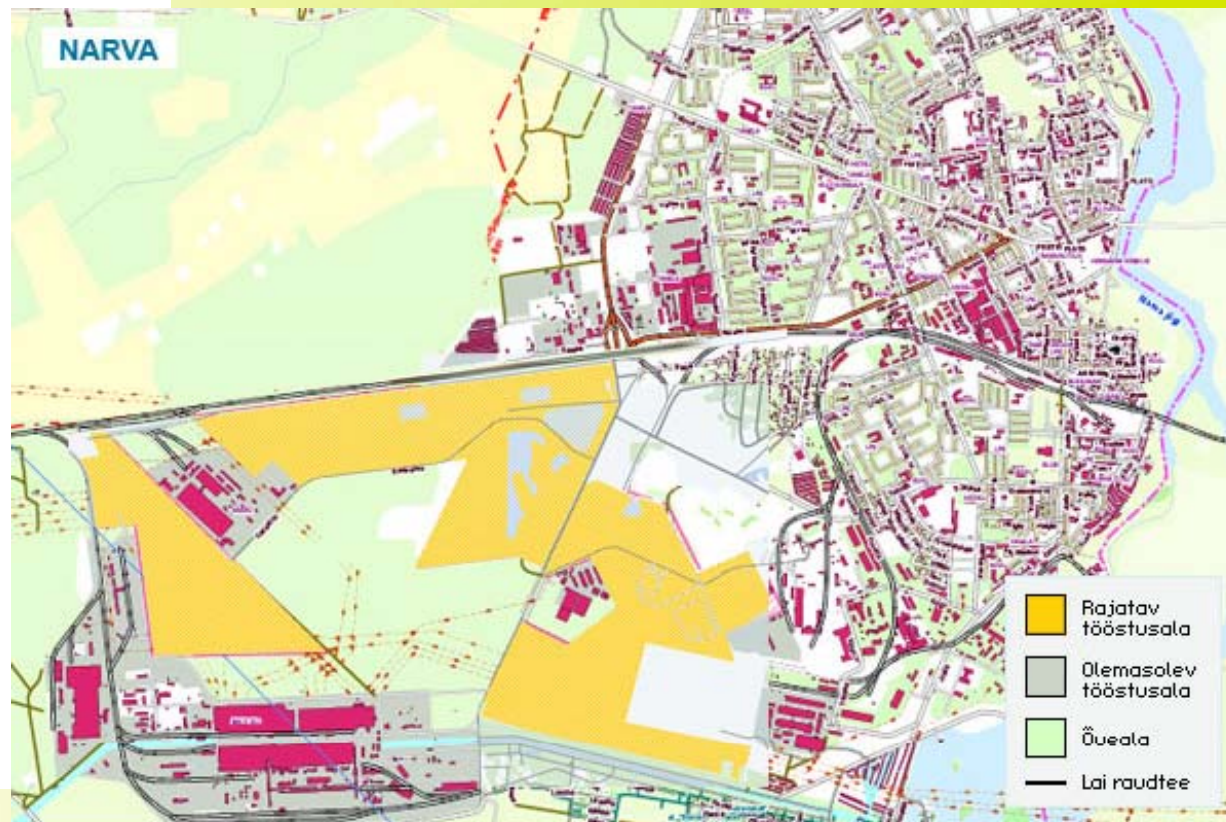
Common marketing of Ida-Viru industrial parks (2)



Common marketing of Ida-Viru industrial parks (3)



IDA-VIRUMAA
tööstusalad



targa otsustaja partner

www.ivia.ee

Useful advices

- Need for visible concept / idea, importance of critical mass
- Involvement of new knowledge and different partners
- Strengthening regional economic clusters, talents-technology-tolerance
- Creating new know-how and services and sustainable use of existing resources
- Collaboration between state organisations, universities and entrepreneurs for innovations



targa otsustaja partner

THANK YOU FOR ATTENTION!

Feedback and questions:

Tarmo Pikner

BDA Consulting OÜ

627 4414

tarmo@bda.ee



targa otsustaja partner